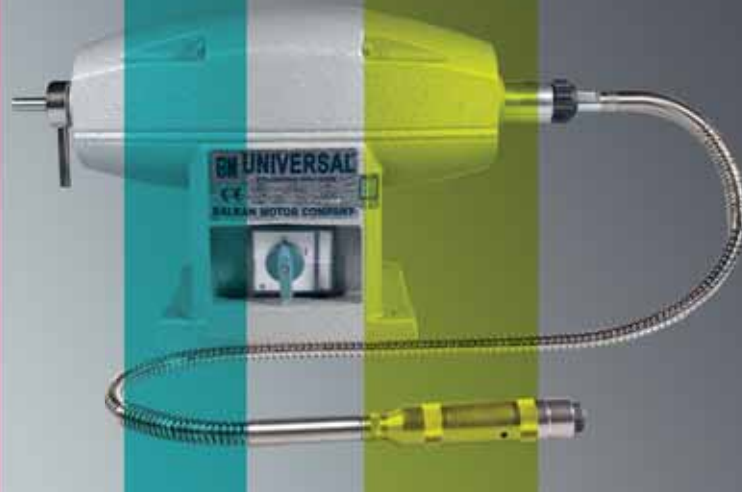


UNIVERSAL®



**BALKAN
MOTOR**
SANAYİ VE TİCARET A.Ş.
Since 1953

SPİRAL MOTORLAR
FLEXIBLE SHAFT MACHINES
MOTEUR SUSPENDU

CE





**BALKAN
MOTOR**
SANAYİ VE TİCARET A.Ş.
Since 1953



SPİRAL MOTORLAR
FLEXIBLE SHAFT MACHINES
MOTEUR SUSPENDU

www.balkanmotor.com



**BALKAN
MOTOR**
SANAYİ VE TİCARET A.Ş.
Since 1953

1953 yılında İstanbul'da elektrik motorları imalatına başlayan şirketimiz, yüksek devirli spiral motorlar ve aksesuarları konusunda en son teknolojiye uygun olarak üretimine başarı ile devam etmektedir. Teknolojik alt yapıya ve Ar-Ge çalışmalarına büyük önem veren firmamız, bu konuda devamlı yatırım yaparak kaliteli üretimi ile pazar lideri konumuna gelmiştir. “Universal” ve “Venus” markası altında ürettiğimiz spiral motorlar ve aksesuarları; kuyumculuk sektöründe, diş protez laboratuvarlarında, bijuteri ve takı imalat sektöründe, kalıp ve makine imalatında, mermer, taş ve ahşap oymacılığında, restorasyon çalışmalarında ve her türlü hobi işlerinde yaygın olarak kullanılmaktadır. Ülkemizde konusunda lider olan firmamız, tüm Avrupa Birliği ülkelerine, Rusya, Ukrayna, tüm Ortadoğu ülkelerine, başta Kuzey Afrika ülkeleri olmak üzere diğer Afrika ülkelerine pazar lideri olarak ihracat yapmaya devam etmektedir.

Our company, started electric motor manufacturing in 1953 in Istanbul, continue its production of high-speed Flexible Shaft Machines and related accessories in compliance with the latest technology. Our company, features technological infrastructure and research and development, became the market leader by its quality production enabled by the continuous investment on such areas. Flexible Shaft Machines, manufactured under the brand names of “Universal” and “Venus”, are commonly used in jewellery sector; dental prosthesis laboratories; bijouterie and ornament manufacturing sector; mould and machine production; marble, stone and wood engraving; restoration works and in any kind of hobbies. Our company is the pacesetter in our country and continues its exportation to all European Union countries; Russia, Ukraine; all Middle East countries; to African states in particular Northern Africa countries.

Notre entreprise qui commence à la production des moteurs électriques à Istanbul à l'année 1953 continue avec succès à sa production conformément à la dernière technologie sur les moteurs suspendu à vitesse élevée et les accessoires. Notre entreprise qui donne une grande importance à l'infrastructure technologique et aux travaux de Recherche et de Développement est devenue le leader du marché avec sa production qualifiée. Les moteurs suspendu et les accessoires que nous produisons sous les marques “Universal” et “Venus” sont utilisés fréquemment dans le secteur de bijoux, dans les laboratoires de prothèse dentaire, dans le secteur de bijouterie et bijoux, dans la production de moule et de machine, dans la sculpture de marbre, de pierre et de bois, dans les travaux de restauration et dans toutes sortes de travaux de loisir. Notre entreprise qui est leader dans son domaine d'activité dans notre pays continue à faire l'exportation en tant que le leader du marché à tous les pays de l'Union Européenne, à Russie, à l'Ukraine, à tous les pays de Moyen Orient et en particulier dans les pays de l'Afrique du Nord et les autres pays de l'Afrique.



BM 21A (921.51.001)
(125 W, 15000 rpm, 220/240 VAC)



BM 23A (923.53.001)
(200 W, 25000 rpm, 220/240 VAC)



BM 23C (923.53.011)
(200 W, 25000 rpm, 220/240 VAC)



BM 26A (926.56.001)
(300 W, 25000 rpm, 220/240 VAC)



BM 26C (926.56.011)
(300 W, 25000 rpm, 220/240 VAC)



BM 24A (924.54.001)
(500 W, 22500 rpm, 220/240 VAC)



BM 24C (924.54.011)
(500 W, 22500 rpm, 220/240 VAC)



BM 24G (924.54.006)
(1000 W, 25000 rpm, 220/240 VAC)



BM 25A (925.55.001)
(500 W, 25000 rpm, 220/240 VAC)



BM 25C (925.55.011)
(400 W, 18000 rpm, 220/240 VAC)



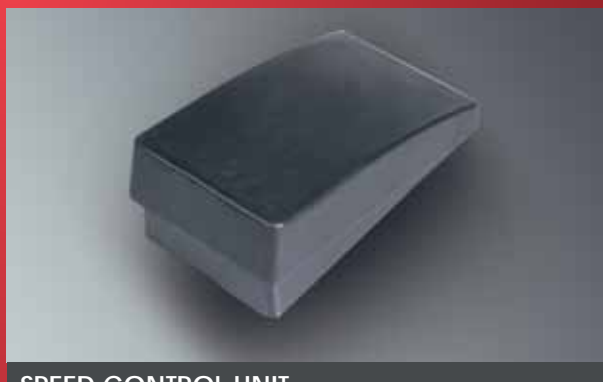
BM 25E (925.55.021)
(200 W, 15000 rpm, 220/240 VAC)



BM 25M (925.55.041)
(800 W, 25000 rpm, 220/240 VAC)



BM 24E (924.54.005)
(500 W, 18000 rpm, 220/240 VAC)



SPEED CONTROL UNIT
820.51.111 (BM 21A / BM 23C / BM 26C)
820.50.005 (BM 24E / BM 25A / BM 25C / BM 25E / BM 25M)



SPEED CONTROL UNIT
820.53.001 (BM 23A / BM 26A)
820.54.001 (BM 24A) 820.54.006 (BM 24G)



SPEED CONTROL UNIT (TABLE TOP)
870.21.230 (BM 21A / BM 23C / BM 24C / BM 26C)
870.24.250 (BM 24E / BM 25A / BM 25C / BM 25E / BM 25M)



BM 39B (939.69.002) POLISHING MACHINE
(500 W, 1500 / 3000 rpm, 220/240 VAC)



BM 39C (939.69.003) POLISHING MACHINE
(300 W, 1500 / 3000 rpm, 220/240 VAC)



BM 39D (939.69.004) POLISHING MACHINE
(700 W, 3000 rpm, 220/240 VAC)



BM 39E (939.69.005) POLISHING MACHINE
(700 W, 3000 rpm, 220/240 VAC)



BM 39K (939.69.011) POLISHING MACHINE
(400 W, 3000 rpm, 220/240 VAC)



BM 39R/L (939.69.017/12) POLISHING MACHINE
(700 W, 3000 rpm, 220/240 VAC) RIGHT/LEFT



BM 20A (920.50.001)
FLEXIBLE SHAFT MACHINE (DESKTOP TYPE)
(125 W, 15000 rpm, 220/240 VAC)



BM 20B (920.50.002)
FLEXIBLE SHAFT MACHINE (DESKTOP TYPE)
(200 W, 25000 rpm, 220/240 VAC)



BM 81A (981.81.001) POLISHING BENCH
 0,55 kW / 230 V, 50 Hz 3000 rpm Vacuum 750 m³/h



**BM 82A (982.82.001) POLISHING BENCH
 (Variable Speed Control)**
 0,55 kW / 230 V, 50 Hz 300 – 3000 rpm Vacuum 750 m³/h



**BM 82B (982.82.002) POLISHING BENCH
 (2 Speed)**
 0,55 kW / 230 V, 50 Hz 1500 / 3000 rpm Vacuum 750 m³/h



**BM 83A (983.83.001) TWO SPINDLE POLISHING BENCH
 (2 Speed)**
 0,55 kW / 230 V, 50 Hz 1500 / 3000 rpm Vacuum 2 x 750 m³/h



**BM 84A (984.84.001) TWO SPINDLE POLISHING BENCH
 (Variable Speed Control)**
 0,55 Kw / 230 V, 50 Hz 300 – 3000 rpm Vacuum 2 x 750 m³/h



**BM 39S (939.69.018) DUST COLLECTOR
 (Led Light Included)**



860.53.001
FLEXIBLE SHAFT
(METALLIC)



860.53.012
FLEXIBLE SHAFT
(S TYPE PLASTIC)



860.53.002
FLEXIBLE SHAFT
(PLASTIC)



860.53.101
FLEXIBLE SHAFT
(HEAVY DUTY METALLIC)



860.53.401
FLEXIBLE SHAFT
(S TYPE METALLIC)



860.53.004
FLEXIBLE SHAFT
(BUILT-IN HAND PIECE)



860.53.011
FLEXIBLE SHAFT
(SE TYPE METALLIC)



860.53.301
FLEXIBLE SHAFT
(GEARED TYPE / 0-4 mm.)



860.53.201
FLEXIBLE SHAFT
(FARO TYPE METALLIC)



860.54.652 GOLD LINE HANDPIECE
(T / 30 QUICK CHANGE)



860.54.661 HANDPIECE
(T / 30 QUICK CHANGE)



860.54.664 HANDPIECE
(KAVO TYPE)



860.54.601 HANDPIECE
(T / 10 LABORATORY TYPE)



860.54.663 HANDPIECE
(GEARED TYPE / 0-4 mm)



860.54.683 HANDPIECE
(GEARED TYPE / 0-6 mm)



860.50.001
MOTOR HANGER
(CLAMP TYPE)



860.50.002
MOTOR HANGER
(TABLE TOP TYPE)



Spiral motorlarımız en son teknolojinin ürünü olup, sürekli olarak tüm hızlarda yüksek tork üreten motorun her devirde güçlü olmasını sağlar. Üstün performanslı hız kontrol ünitesi ile en düşük devirden en yüksek devire kadar yumuşak ve kontrollü bir hız ayarı sunar. Kuyumculukta, diş laboratuvarlarında, değerli taş, mermer, cam ve ahşap işlemlerinde, kalıp imalatlarında, bakır, gümüş gibi madenlerin işlenmesinde, tüm el sanatlarında ve hobi işlerinde güvenle kullanılmaktadır.



Our flexible shaft machines are produced with the latest technology and provide a strong motor with high torque in all speeds and all rotations. Speed adjustment from the lowest to the highest rotation can be done in a smoothly and controlled way with the high performance speed control unit. It can be safely used in for the jewelery production, dental laboratories, precious stones, marble, glass and wood carving, mould production, metals like copper, silver, all crafts and hobbies.



Nos moteurs suspendu sont des produits de la dernière technologie, ils produisent un couple supérieur dans toutes les vitesses et assurent que le moteur soit puissant pour chaque tour. Avec l'unité de contrôle de vitesse d'une performance supérieure présente un réglage de vitesse souple et bien contrôlé d'un tour plus bas jusqu'au tour le plus élevé. On utilise avec la sécurité dans la bijouterie, les laboratoires de dent, travaux de pierre précieuse, marbre, verre, et du bois à la fabrication de moule, aux travaux des mines comme du cuivre, d'argent, dans tous les arts manuels et travaux de hobby.



Le nostre macchine da alberi flessibili vengono fabbricate con la tecnologia più moderna e hanno un motore forte che ha un valore a coppia a tutte le velocità e tutti i giri. La Regolazione della velocità dai giri più bassi ai giri più alti si effettua in un modo scorrevole e sempre sotto il controllo dell'unità di controllo di velocità. Si può adoperare con sicurezza per la fabbricazione di gioielleria, nei laboratori dentistici, nell'industria delle pietre preziose, del marmo, del vetro, ed anche per intagliare il legno, per la produzione delle forme e dei metalli come rame, argento.



Unsere hänge motoren werden mit der neusten technologie hergestellt und sorgen für einen starken motor mit einem hohen drehmoment in jeder geschwindigkeit und allen umdrehungen. Geschwindigkeitseinstellungen von der niedrigsten bis zur höchsten umdrehung können mit einem weichen übergang durchgeführt und mit der geschwindigkeitskontrolleinheit mit hoher performance kontrolliert werden. Die motoren können für goldschmiede, zahnlabors, edelsteine, marmor, glas- und holzverarbeitung, im werkzeugbau, für die verarbeitung von metallen wie kupfer, silber und bei allen handwerken und hobbyaktivitäten verwendet werden.



Электродвигатели для спиральных типов бормашин являются продуктом новейшей современной технологии и обеспечивают высокую мощность при любых высоких или низких оборотах. Благодаря высоко – эффективному регулятору скорости, электродвигатели для спиральных типов бормашин предоставляют возможность плавно проконтролировать и настроить скорость оборотов двигателя с самой высокой до самой низкой скорости. Электродвигатели для спиральных типов бормашин надежно используются в технических кабинетах стоматологических поликлиник, в цехах для обработки ювелирных изделий из драгоценного камня, мрамора, стекла и дерева, а также при производстве форм, при обработке продуктов из меди, серебра и других металлов, в любых других профессиональных или любительских работах.



ان مواتيرنا اللولبية هي حصيلة اخر طراز التكنولوجيا حيث تنتج طاقات عالية في جميع درجات السرعة مؤمنا نتائج مرضية، وحيث تعمل في اقل مستويات السرعة بحصيلة السرعة العالية بنتيجة وحجة تنظيم السرعات . تستعمل بطمئنينة في مختبرات الاسنان و في جليخ الاحجار الكريمة و الزجاج والخشب والرخام وفي صناعة القوالب وكذا لدى اعطاء الشكل إلى الفضة والنحاس والأعمال اليدوية الدقيقة واعمال الهوايات المختلفة .



پس از سالها تجربه اينک ما مفتحريم که آخرين دستاورد تکنولوژی را به مشتریان خود معرفی نماییم : موتور های آویز با سرعتهای متغیر که بهره بری از کشتاورهای سریع در آن سبب قوی تر شدن دور موتور گردیده است دور موتور این محصول جدید از آهسته تا دور تند به راحتی قابل کنترل می باشد. از کاربردهای بهینه این محصول جدید می توان به کاربرد آن در صنایع زیر اشاره کرد؛ جواهرسازی، لابراتوارهای دندانسازی، صنایع سنگهای قیمتی، مرم ، صنایع مربوط به شیشه و تخته، تولید قالبها، صنایع معادن نظیر نقره کاری و تمامی صنایع دستی.





SPİRAL MOTORLAR

FLEXIBLE SHAFT MACHINES

MOTEUR SUSPENDU

FACTORY & HEAD OFFICE

Yenibosna, Merkez Mah. Sanayi Caddesi No:19
34197 Bahçelievler - İstanbul / TÜRKİYE

Phone : +90 212 551 01 00 pbx

Fax : +90 212 551 31 67

e-mail : balkan@balkanmotor.com

www.balkanmotor.com

SHOWROOM & SALES

Karaköy, Tersane Caddesi No: 21
34421 Beyoğlu - İstanbul / TÜRKİYE

Phone : +90 212 249 77 77 - 244 40 22

Fax : +90 212 249 40 77

e-mail : info@balkanpazarlama.com

sales@balkanmotor.com

www.balkanpazarlama.com



 facebook.com/universalmotor

 universalmotor

 @BALKANMOTOR



DISTRIBUTOR

