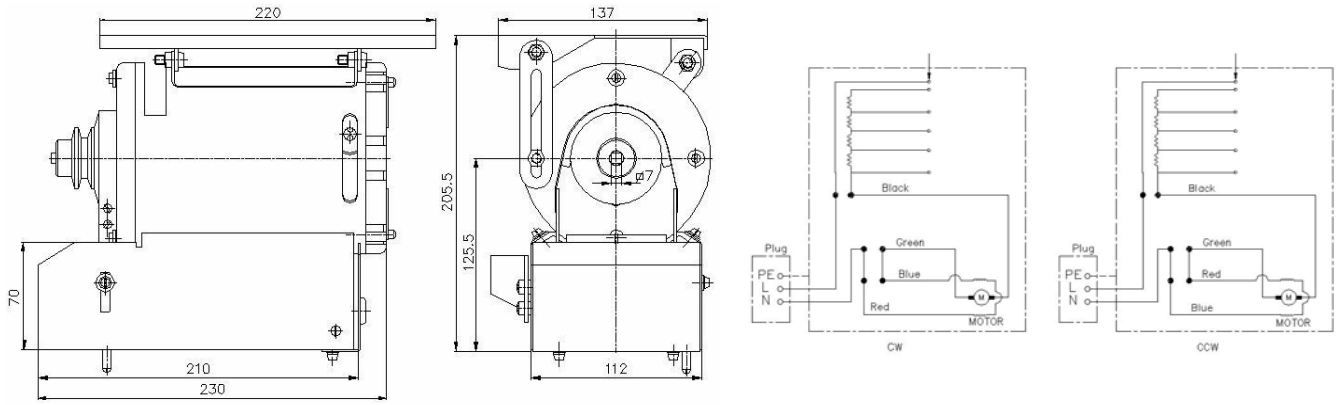




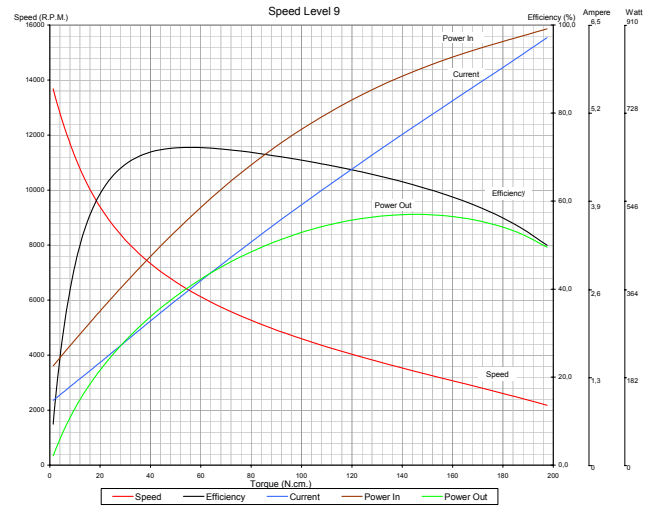
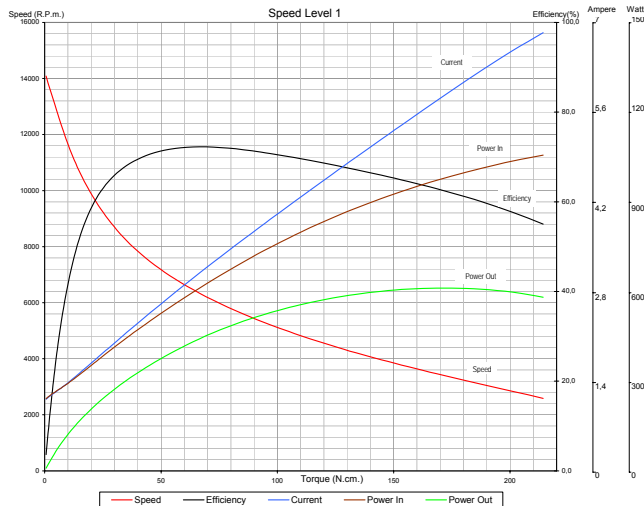
Type : BM 12A

- Protection class:0
- Insulation class: B
- Motor shaft: C 1050
- Cables: H05VV-F 3G 1mm²
- Bearings: Front: 6000 ZZ Ball Bearing
Rear : Sinter Fe

Industrial Sewing Machine Motor



MOTOR TYPE	MOTOR CODE	TEST VOLT. (V)	TEST FREQ. (Hz)	ROTATION DIRECTION	SPEED LEVEL	MOTOR PERFORMANCE VALUES													
						At No Load		At Stall		At Maximum Efficiency				At Maximum Power					
						Speed (R.P.M.)	Current (Amp)	Torque (Ncm)	Current (Amp)	Torque (Ncm)	Speed (R.P.M.)	Current (Amp)	Efficiency (%)	Power Out (W)	Torque (Ncm)	Speed (R.P.M.)	Current (Amp)	Efficiency (%)	Power Out (W)
BM12A	912.41.001	220	50	RIGHT	1	14115	1.117	247.01	6.839	66.97	6319	3.101	72.24	443.2	172.09	3393	5.868	62.41	611.49
				Blue+Green	3	13659	1.037	218.4	6.303	63.81	6089	2.899	72.89	406.95	155.65	3368	5.295	64.01	548.96
				LEFT	8	13376	0.905	206.03	5.888	54.37	6019	2.487	71.47	342.75	130.19	3430	4.549	63.49	467.7
				Green+Red	9	13912	0.941	218.43	6.496	55.8	6336	2.603	72.2	370.3	145.31	3408	5.017	63.58	518.59



Remarks:

- Documents here includes only reference values. BALKAN MOTOR A.Ş. has the right to revise them without any prior information.
- BALKAN MOTOR A.Ş. could modify all its products according to customer requirements.

BALKAN MOTOR SANAYİ VE TİCARET A.Ş.

Yenibosna Sanayi Caddesi No:21 34530 Bahçelievler/Istanbul/TURKEY

Tel:+90 (212)551 01 00 (7 Lines) Fax: +90 (212) 551 31 67 www.balkanmotor.com.tr e-mail: balkan@balkanmotor.com.tr

