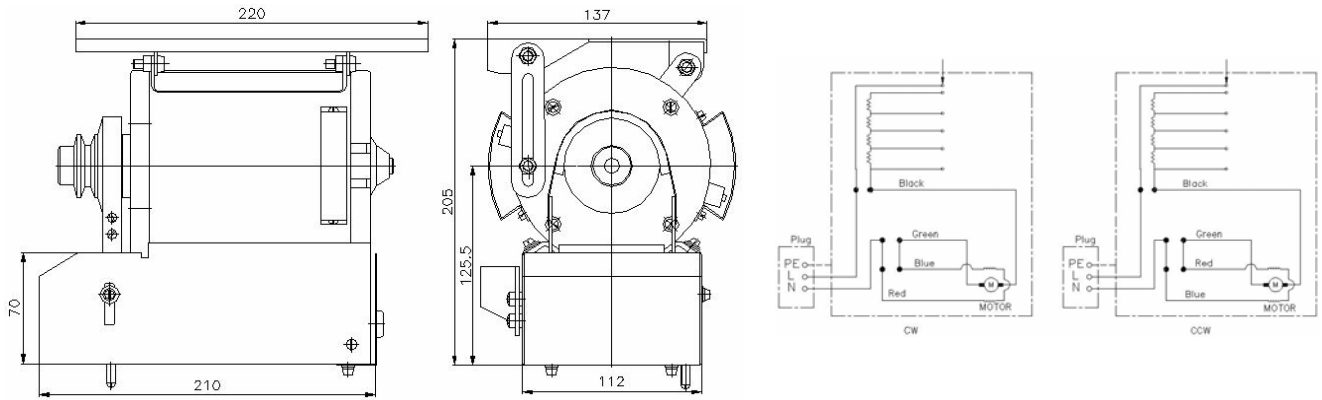




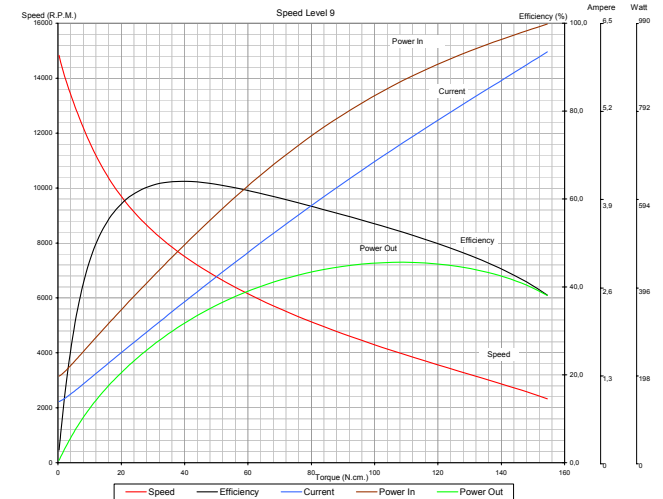
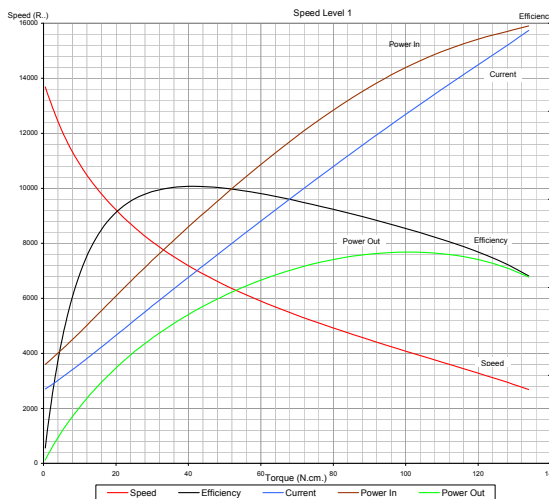
Type : BM 10A

- Protection class:0
- Insulation class: B
- Motor shaft: C 1050
- Cables: H05V-K 0.50mm² VDE approved
- Bearings: Front: 6000 ZZ Ball Bearing
Rear : Sinter Fe

Industrial Sewing Machine Motor



MOTOR TYPE	MOTOR CODE	TEST VOLT. (V)	TEST FREQ. (Hz)	ROTATION DIRECTION	SPEED LEVEL	MOTOR PERFORMANCE VALUES													
						At No Load		At Stall		At Maximum Efficiency				At Maximum Power					
						Speed (R.P.M.)	Current (Amp)	Torque (Ncm)	Current (Amp)	Torque (Ncm)	Speed (R.P.M.)	Current (Amp)	Efficiency (%)	Power Out (W)	Torque (Ncm)	Speed (R.P.M.)	Current (Amp)	Efficiency (%)	Power Out (W)
BM10A	910.42.001	220	50	RIGHT	1	13878	0.915	151.57	5.541	41.51	7070	2.379	62.96	307.35	100.46	4062	4.377	53.27	427.36
					3	13258	0.812	155.31	5.382	34.84	7134	2.088	59.74	260.3	89.07	4000	4.026	51.33	373.13
				LEFT	8	14495	0.823	161.71	5.821	39.45	7255	2.278	63.62	299.78	100.14	4015	4.369	52.64	421.08
					9	15030	0.903	168.41	6.202	39.33	7562	2.356	64.03	311.51	108.38	3977	4.714	52.56	451.4



Remarks:
 • Documents here includes only reference values.BALKAN MOTOR A.Ş. has the right to revise them without any prior information.
 • BALKAN MOTOR A.Ş. could modify all its products according to customer requirements.

BALKAN MOTOR SANAYİ VE TİCARET A.Ş.
 Yenibosna Sanayi Caddesi No:21 34530 Bahçelievler/Istanbul/TURKEY

Tel:+90 (212)551 01 00 (7 Lines) Fax: +90 (212) 551 31 67 www.balkanmotor.com.tr e-mail: balkan@balkanmotor.com.tr

